

AMSTM Suite: Intelligent Device Manager Calibration Assistant SNAP-ONTM Application

- *Interface to smart documenting calibrators, enabling automatic transfer of calibration test procedures and results*
- *Build calibration routes to establish ordered groups of devices for calibration*
- *Print a calibration certificate, calibration summary, and general calibration data reports*



FIGURE 1. All device information is stored in a single database, so you can quickly evaluate calibration trends for each device and ensure calibrations are completed on time.

ADD MORE CALIBRATION POWER WITH AMS DEVICE MANAGER

AMS Device Manager streamlines daily maintenance activities, including calibration, and provides an easy way to document those tasks. Within the standard AMS Device Manager capability, you can track calibration activities, as well as set up test definitions, define calibration schedules, conduct tests, record test results, and analyze results.

AMS Device Manager allows for calibrating and tracking general field devices, flow verification, and external lab calibrations.

The Calibration Assistant SNAP-ON application interfaces with documenting calibrators and manages the calibrations of HART®, FOUNDATION™ fieldbus, and conventional devices. For HART and conventional devices, calibration compares the input of the transmitter to an expected output measured by the calibrator. For FOUNDATION fieldbus devices, it compares the input of transmitters to a digital output.

INTERFACE TO SMART DOCUMENTING CALIBRATORS

Load sets of Test Definitions (calibration routes) from AMS Device Manager into a documenting calibrator. Then take the calibrator to the field to test and adjust devices, storing the test results in the calibrator's memory. When the calibrator is reconnected to the AMS Device Manager PC, the test data will be transferred into the database.

BUILD CALIBRATION ROUTES

When you add the Calibration Assistant SNAP-ON application to AMS Device Manager, you can group devices into calibration routes and organize multiple devices to be calibrated on the same schedule.

PRINT CALIBRATION REPORTS

With AMS Device Manager, you can readily look at the performance of a single device over time and estimate the optimum calibration interval for that instrument. All device information is stored in a single, easy-to-use database so you can quickly evaluate calibration trends for each device. With all calibration activity information right at your fingertips, it's easy to identify those devices due for calibration, which comes in handy when defining future calibration schedules.



AMS Suite: Intelligent Device Manager powers PlantWeb through predictive and proactive maintenance of intelligent field devices to improve availability and performance.

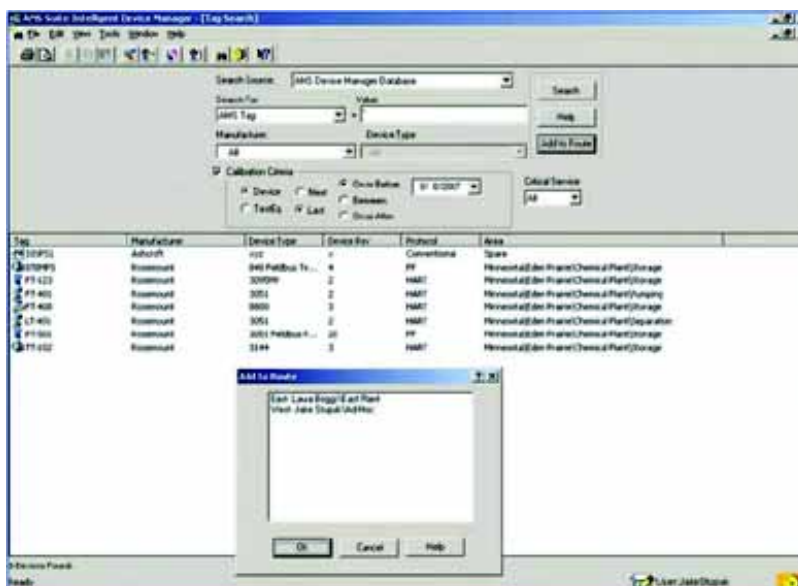


FIGURE 2. Easily assign devices calibration routes to streamline your calibration activities.

*The Emerson logo is a trade mark and service mark of Emerson Electric Co.
Rosemount and the Rosemount logotype are registered trademarks of Rosemount Inc.
PlantWeb, AMS, and SNAP-ON are a mark of one of the Emerson Process Management companies.
All other marks are the property of their respective owners.*

Standard Terms and Conditions of Sale can be found at www.rosemount.com/terms_of_sale

Emerson Process Management

Asset Optimization Division

12001 Technology Drive
Eden Prairie, MN 55344 USA
T 1(952) 828-3206
F 1(952) 828-3033

www.assetweb.com